



Share with a Tweet



Share on LinkedIn



Forward this Newsletter to a friend!



Co-creating solutions with 22 hubs across the Arctic

What's new from the ArcticHubs

Dear **reader**,

Welcome to the Spring edition of our newsletter!

It's been a busy winter season for ArcticHubs research. This has aligned nicely with the annual season of regional events, allowing us to share our insights through a range of activities and events in this first quarter of 2023.

First in line was the annual Arctic Frontiers gathering, when a good cluster of the ArcticHubs team gathered in person in Tromsø, to join the event. More directly, thanks to the hospitality of our partners at NOFIMA a side event was organised that brought together the first in person meeting alongside our sister projects, for a special **PolarCluster action group**. Our attendance in Tromsø also gave us the opportunity to visit the **ArcticHubs project hub area**, where **#CodGis studies** by NOFIMA have been conducted.

During the winter months the ArcticHubs **publications production** line ramped up! Two new journal articles from our researchers were published – alongside the completion of further ArcticHubs research reports!

Then in February, our colleagues from **BOKU University** contributed to the extensive discussions that look place during **#ASSW** - the Arctic Science Summit Week, which in 2023 was conveniently staged on their home ground in Vienna. Finally, we hear from **Malå hub in Sweden**, about the progress being made in identifying and co-designing solutions to forest land use conflicts.

In this newsletter, we will therefore sharing with you:

- updates from hub activities in **Malå**, Sweden and in **Ringvassøya** island, Norway
- insights from the recent **#ASSW** week
- two new research publications
- news from the PolarCluster action group

Additionally, we will hear news from some of our researchers, and share next relevant events.



HUB NEWS




Dr Sten Siikavuopio explaining the latest research on king crab cultivation, aquaculture options in the area. Research hub in Ringvassøya island, Norway

A snapshot of ArcticHubs NOFIMA research team's activities in Ringvassøya island and Tromsø.

After several productive workshop days indoors at the **NOFIMA** offices in Tromsø last January, ArcticHubs researchers maintained their tradition of always embracing **a hub field visit** to further stimulate ideas and an understanding of the multi land and sea use realities in the Arctic today. The destination was **to the island of Ringvassøya**, home to the Tromsø **Aquaculture Research Station**.

In **Ringvassøya** we spoke with NOFIMA researcher **Dr Sten Siikavuopio**, about some of the emerging insights growing out of the ArcticHubs research.

First introduced in the Winter 2022 edition of ArcticHubs newsletter ([link](#)), we had an opportunity to directly observe **the site where CodGIS research**  **has thrown up some fascinating results**. Pointing out across the fjord Sten explained,

*“There you have the facilities for the salmon farm, and in this area, the cod were moving for one year with this transponder after we had tagged them and followed them all year. And what we saw that was **the wild cod prefer to stay under the sea cages of the salmon farm**. It was **easy food for them**. It was like a fast food’s restaurant where they could easily get food enough. So*

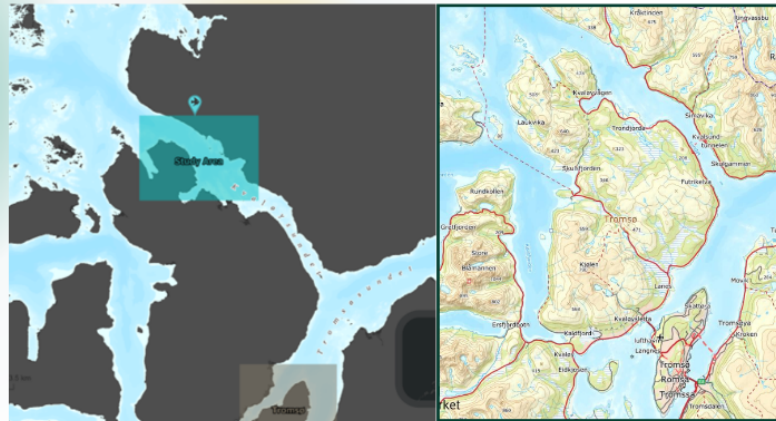
Read our full summary [here](#).

Ringvassøya island and Tromsø hub CodGIS study area

Ringvassøya island is situated in an ideal location to analyse interactions between **aquaculture, tourism and fishing**.

ArcticHubs team in **NOFIMA** has been contributing to this research by conducting study of cod behaviour.

CodGIS involves tagging and monitoring adult cod around the fjords where fish farm cages are distributed. This data is helping understand whether fish farm activities influence the behaviour of cod migrations and in what ways the fish habitat is changing.



FISH
FARMING



#ArcticHubs
#ArcticHubsFacts



Horizon 2020

Co-designing solutions for forest area in Malå, Sweden



FORESTRY

Read more...

APPLIED RESEARCH

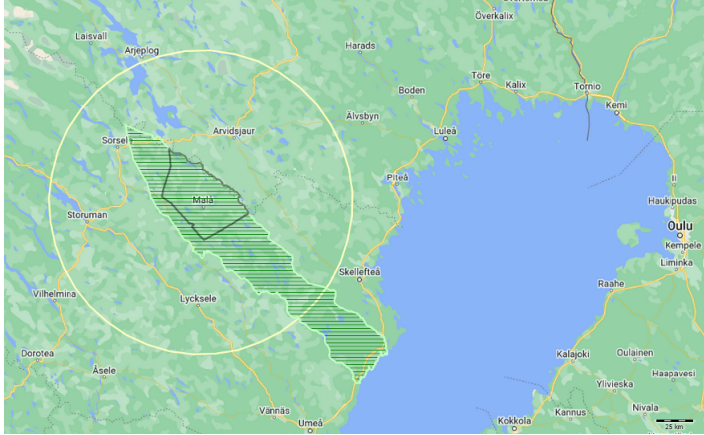
What the forests should be
used for?

News from a recent workshop in
Malå, Sweden



At a recent workshop with local stakeholders in **Malå**, Sweden ([here to read more about Malå hub #6](#)), organised by our partner **Swedish University of Agricultural Sciences (SLU)**, the issue was raised of how and for which purpose the forest should be managed and used. The workshop was an ideal occasion for our partners to gather information and work together to,

- collect feedback on forestry land issues in Malå
- build future scenarios
- explore alternative solutions
- also to further test collaborative data collection methods such as PPGIS like [Maptionnaire platform](#)



Map elaborated By Stefan Sandström: forestry hub area (wood-procurement area for the Malå sawmill) and the indigenous hub (Malå Reindeer Herding Community), within the municipality of Malå.

Important **early steps** towards the identification of **a common ground and the visioning of future forest in Malå were made** by the participants. Another workshop is already planned for May 2023 to co-design possible solutions.

Based on a new **analysis of the state of the forest** in the region, and using four conceivable future scenarios regarding felling and future forest state, the needs for adaptation, measures and decisions to reach a desired future in the area, were discussed.

Read more [here](#).

Synergies, inputs and new action groups from Arctic Science Summit Week (ASSW) 2023



Our partners from University of Natural Resources and Life Sciences, Vienna (BOKU), Dr Ivana Živojinović and Dr Jerbelle Elomina attended, as ArcticHubs representatives, The Arctic Science Summit Week (ASSW) 2023 #assw2023 in #Vienna. Here are some snapshots. Read more in the news section!

● Read the news from our partners - Boku University, [here](#).

INTERVIEW





*" In Nuuk some **local fishermen and hunters**, whether recreational or commercial hunters, are **concerned about the increased user level of the fjord and land area**. Some stakeholders are **calling for increased control and regulation of tourism activities in order to preserve the area's character as a wilderness area – with untouched nature...**"*

Interview with Kristine Lynge-Pedersen, senior researcher at Greenland Institute of Natural Resources

In this interview with Kristine Lynge-Pedersen, senior social researcher at the Greenland Institute of Natural Resources, introduces us to some recent research findings **in Nuuk area**: the growing **conflicts of interest in the use of fjords and land between local fishermen, hunters and tourism operators**. But also examples of **good working relationships and synergies**.

Read her full interview [here](#).



Published papers

Lean forestry – A paradigm shift from economies of scale to precise and sustainable use of ecosystem services in forests

P. Rautio, H. Lideskog , U. Bergsten , M. Karlberg, 2023. *Forest Ecology and Management* (530)120766

Lean forestry is a novel philosophy of forestry practise that aims to direct the idea of “big is beautiful” in modern silviculture more into “do cost effectively only what is needed to fulfil the goals”. This kind of a paradigm shift requires systems with new kinds of abilities to remotely sense the surrounding environment. Download [here](#).

Multiple-use forests and reindeer husbandry – Case of pendulous lichens in continuous cover forests

T. Rikkonen, M. Turunen , V. Hallikainen , P. Rautio, 2023. *Forest Ecology and Management* (529)120651

This study shows that in order to better reconcile forestry and reindeer husbandry in a reindeer herding area, the larger trees should be saved, and the cutting cycle should be kept as long as possible. In addition, lichen-rich areas should be excluded from logging, and the access of reindeer to those areas should be secured. Download the paper [here](#).

University of Agricultural

Sciences, with local stakeholders will addresses the urgent question of what the uses of **local forests**.

📍 Malå, Sweden

will take place in May, 2023 at the Museon in The Hague. More information and registration to follow [here](#).

📍 The Museon in The Hague

🌐 Anthropology Conference 2023

📅 21 - 23 March 2023

👉 The Arctic Anthropology Research Team (Arctic Centre) from UArctic member [University of Lapland](#) is organizing an Anthropology Conference.

📍 Rovaniemi, Finland

🌐 EGU General Assembly 2023

📅 23 - 28 April 2023

👉 The EGU General Assembly 2023 brings together geoscientists from all over the world to one meeting covering all disciplines. Read more [here](#).

📍 Vienna, Austria and Online

Help us to spread #ArcticHubs voices and grow its community:
[share the link](#) to subscribe and read next newsletters!

That's all for now!

Want to explore research collaborations?

Email at arctichubs@luke.fi

Follow us on Social Media



*Copyright © *2023* *ArcticHubs*, All rights reserved.*

Our address is:

E-mail: arctichubs@luke.fi

Website: <https://projects.luke.fi/arctichubs/>

Want to change how you receive these emails?

You can [update your preferences](#) or [unsubscribe from this list](#).

Grow your business with  **mailchimp**